

Item number: **GPT.06.597.19000/B**Revision: **00** • Date: **08 - 2025****ADVENTURE-RACK** ~ 1 h.EASY      DIFFICULT

**ENGLISH** Thank you for choosing this premium product from SW-MOTECH. Visit our online shop for more information (e.g. model assignments). Required documents (e.g. national type approval) are available there for you to download.

Please read and understand all the instructions, safety information and warnings in these mounting instructions before mounting and using the product in order to avoid injury and damage. Keep these mounting instructions for reference.


This product was developed for vehicles in factory condition. Compatibility with original accessories or accessories from other manufacturers cannot be guaranteed.


These mounting instructions have been prepared to the best of our current knowledge. No legal claims relating to accuracy can be made. Errors and omissions excepted. We reserve the right to make technical and design changes. The copyright is held by SW-MOTECH.


**SAFETY WARNING SYMBOL**

 This warning symbol is used in these mounting instructions to warn of deadly dangers, injuries or other hazards. The words **DANGER**, **WARNING** or **CAUTION** are used as part of this warning symbol to convey important safety messages and information relating to the installation and use of this product. These words, together with the safety warning symbol, mean:

 **DANGER:** Indicates a hazardous situation which, if not avoided, will result in death or serious injury!

 **WARNING:** Indicates a hazardous situation which, if not avoided, may result in death or serious injury!

 **CAUTION:** Indicates a hazardous situation which, if not avoided, may result in minor or moderate injury!

 **NOTE:** Important information, but not relating to a risk of death or injury (property damage only)!

**GENERAL INFORMATION**


 **WARNING:** Assembly and/or maintenance of this product requires advanced technical skill, appropriate tools, and a good understanding of tool usage and torque specifications. For your own safety, SW-MOTECH recommends having the assembly and/or maintenance carried out by a qualified and certified motorcycle workshop.


 **WARNING:** If you do choose to assemble this product yourself, carefully and fully read the mounting instructions before assembly and use, and follow all instructions to avoid serious injury or death. Also observe all relevant information in the vehicle manual when mounting or using the product. IF YOU DO NOT UNDERSTAND ANY PART OF THESE MOUNTING INSTRUCTIONS OR NEED AN EXPLANATION AS TO A SPECIFIC INSTRUCTION, DO NOT ATTEMPT TO INSTALL THIS PRODUCT WITHOUT CONSULTING SW-MOTECH FOR ASSISTANCE!

**PREPARATION:** Read the mounting instructions carefully and make sure that all parts on the parts list are available.

 **CAUTION:** Ensure that your vehicle is standing securely. Switch off the engine and remove the ignition key. Allow the engine/exhaust to cool down if necessary. Disconnect the battery when working on the electrical system. Only use proper tools and always wear safety goggles and gloves during assembly and maintenance. Have a second person help you with assembly and maintenance.

**ASSEMBLY:** All parts and connections removed from the vehicle must be reinstalled according to the vehicle manufacturer's specifications or replaced with parts and hardware supplied by SW-MOTECH.

 **WARNING:** Secure all threads with a medium-strength liquid threadlocker, unless otherwise specified.

 **DANGER:** Tightening torques not defined by SW-MOTECH must be obtained from the vehicle manufacturer or a certified motorbike workshop.

**FUNCTIONAL CHECK:** After mounting the product, ensure that no moving parts are obstructed and that the function of the vehicle is not impeded. Cables and hoses must not rub against each other and/or be hindered in any way.

 **WARNING:** Carry out a comprehensive functionality check before you start to drive. Check the tightening torque of all connections and the tight fit of the product after the first 50 km and then at regular intervals. Mounted accessories can change the handling and stability of the vehicle.



**SW-MOTECH GmbH & Co. KG**  
Ernteweg 7-10  
35282 Rauschenberg  
Germany



 [info@sw-motech.com](mailto:info@sw-motech.com)  
 [www.sw-motech.com](http://www.sw-motech.com)



Take note of the symbols and what they mean in the ASSEMBLY section. If the term OEM appears in the ASSEMBLY section, the vehicle manufacturer's specifications must be observed and applied.



If you have any questions, please don't hesitate to contact our Customer Service team or our distributors. You can find our telephone number and a list of our distributors in our online shop:  
**[www.sw-motech.com](http://www.sw-motech.com)**



**Use thread locker:** Indicates that a thread must be coated with liquid thread locker. H (HIGH): high strength; M (MEDIUM): medium strength; L (LOW): low strength.



**Tighten/note the tightening torque information:** Indicates the tightening torque of a part specified by SW-MOTECH or the vehicle manufacturer (OEM).

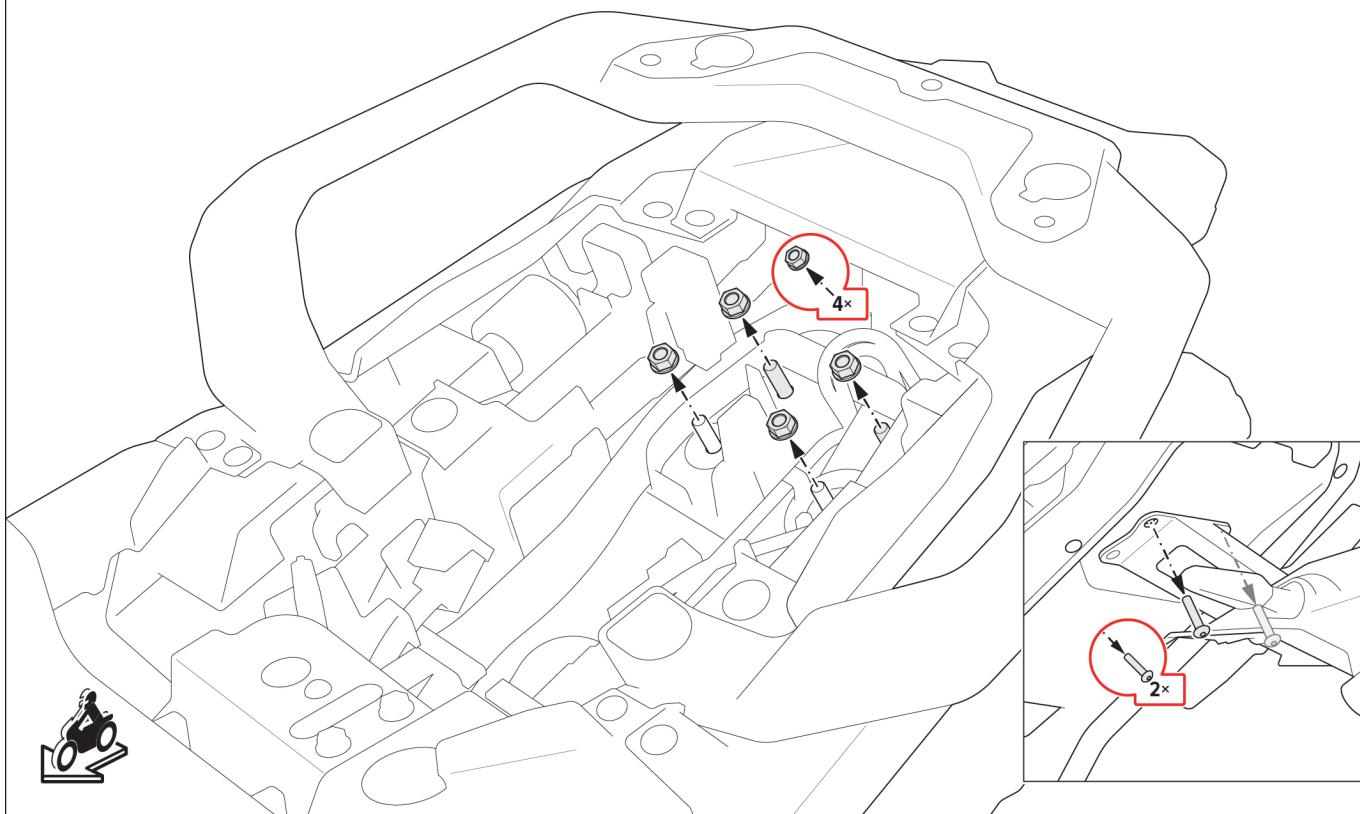


**Do not use thread lock:** Indicates that no liquid thread lock should be used at this point.

# PARTS LIST • READ AND KEEP MOUNTING INSTRUCTIONS!

|  |  |   |   |  |  |
|--|--|---|---|--|--|
| <div>5</div> <div>1</div>  <div>GPT.06.597.901.01.11</div> <div> 1/1</div> | <div>2</div>  <div>GPT.06.597.902.01.11</div> <div> 1/1</div>                              | <div>3</div>  <div>M6 x 45; ISO 6912<br/>SC.ST.06.045.48.6912.088</div> <div> 4/4</div> | <div>4</div>  <div>ø 6.4; DIN 9021<br/>US.ST.064.02.9021</div> <div> 4/8</div>           | <div>5</div>  <div>Ø 18 / ø 6,4 / h 25<br/>DB.ST.0180.0064.0250.48</div> <div> 4/4</div> | <div>6</div>  <div>Ø 18 / ø 6,4 / h 20<br/>DB.ST.0180.0064.0200.48</div> <div> 4/4</div> |
| <div>7</div> <div>7</div>  <div>GPT.06.597.002.11</div> <div> 1/1</div>    | <div>8</div>  <div>M8 x 25; DIN 7991<br/>SC.ST.08.025.02.7991.088</div> <div> 3/3</div>    | <div>9</div>  <div>Ø 25 / ø 8,4 / h 5<br/>DB.ST.0250.0084.0050.48</div> <div> 3/3</div> | <div>10</div>  <div>M8 x 20; DIN 7991<br/>SC.ST.08.020.02.7991.088</div> <div> 2/2</div> | <div>11</div>  <div>M8; DIN 6927<br/>MU.ST.08.02.6927.08</div> <div> 2/2</div>           |  |
| <div>8</div> <div>12</div>  <div>GPT.00.152.002.11</div> <div> 1/1</div> | <div>13</div>  <div>M6 x 18; ISO 7380<br/>SC.ST.06.018.02.7380.109</div> <div> 4/4</div> | <div>14</div>  <div>ø 6.4; DIN 9021<br/>US.ST.064.02.9021</div> <div> 4/8</div>       |   |  |  |

1



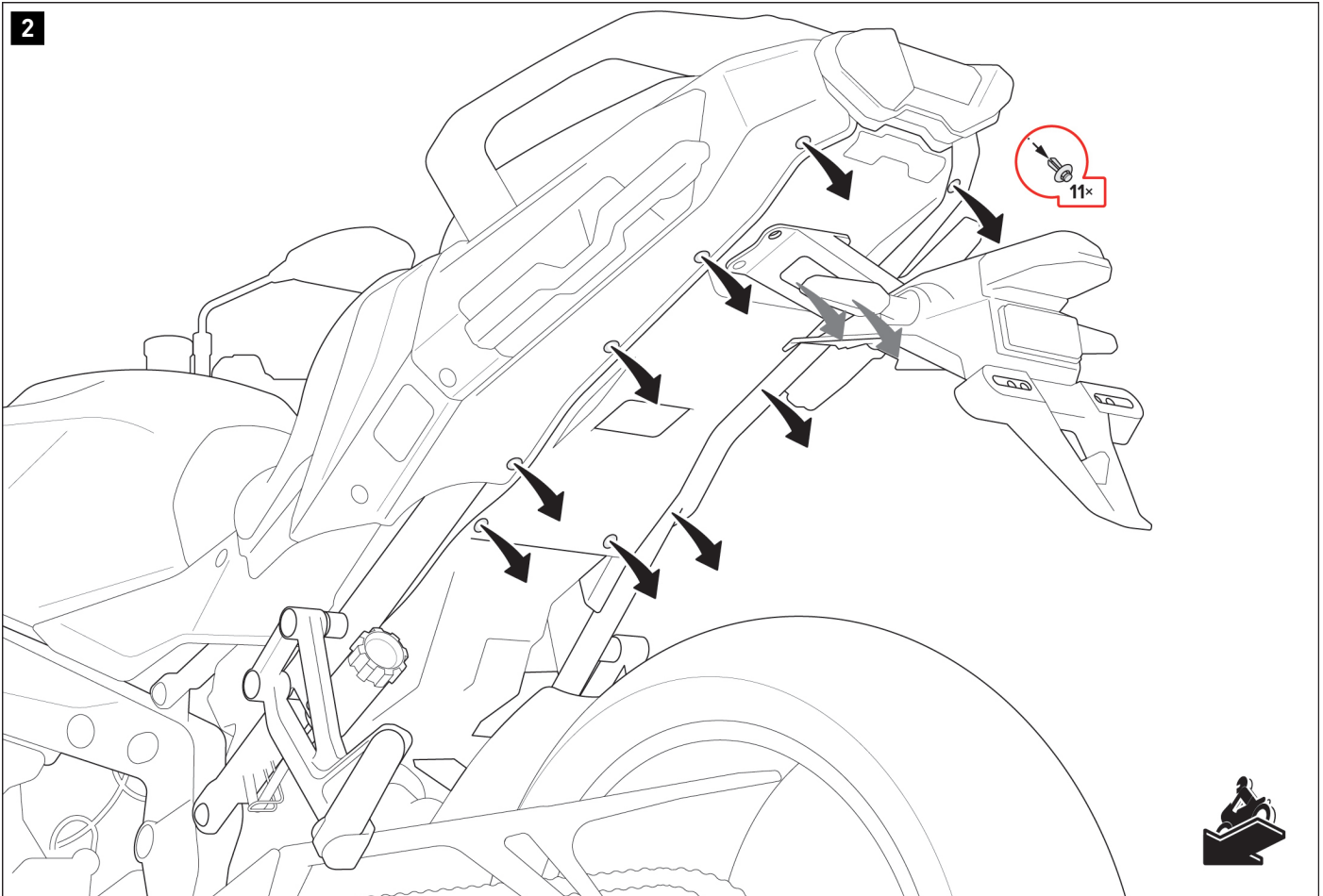
⚠ **WARNING:** Always wear eye and hand protection!

⚠ **WARNING:** Always use suitable tools!

⚠ **NOTE:** Steps [1] to [4] are not applicable to vehicle models with blind spot detection.

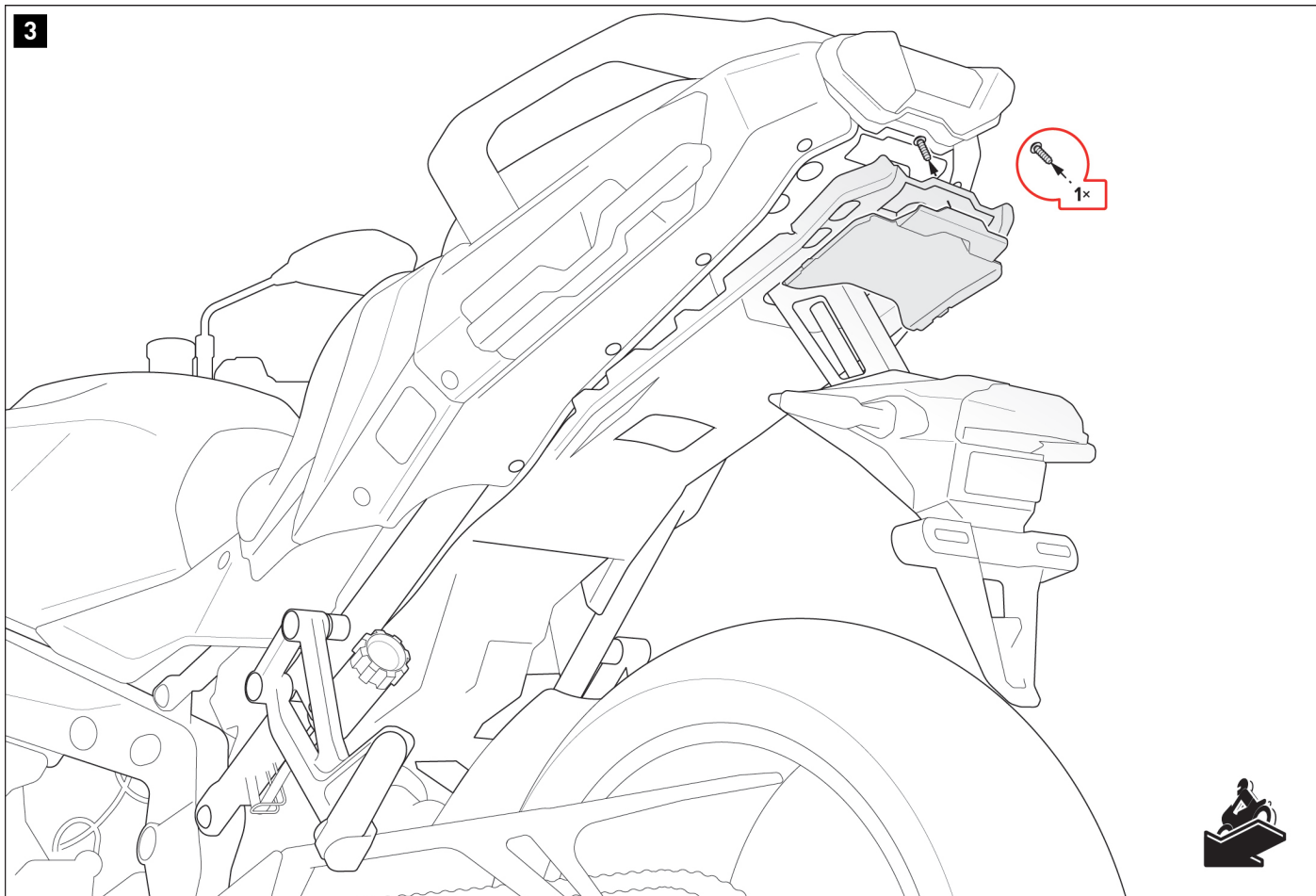
Remove the passenger seat from the vehicle. Loosen the four nuts and remove the two screws from the license plate holder.





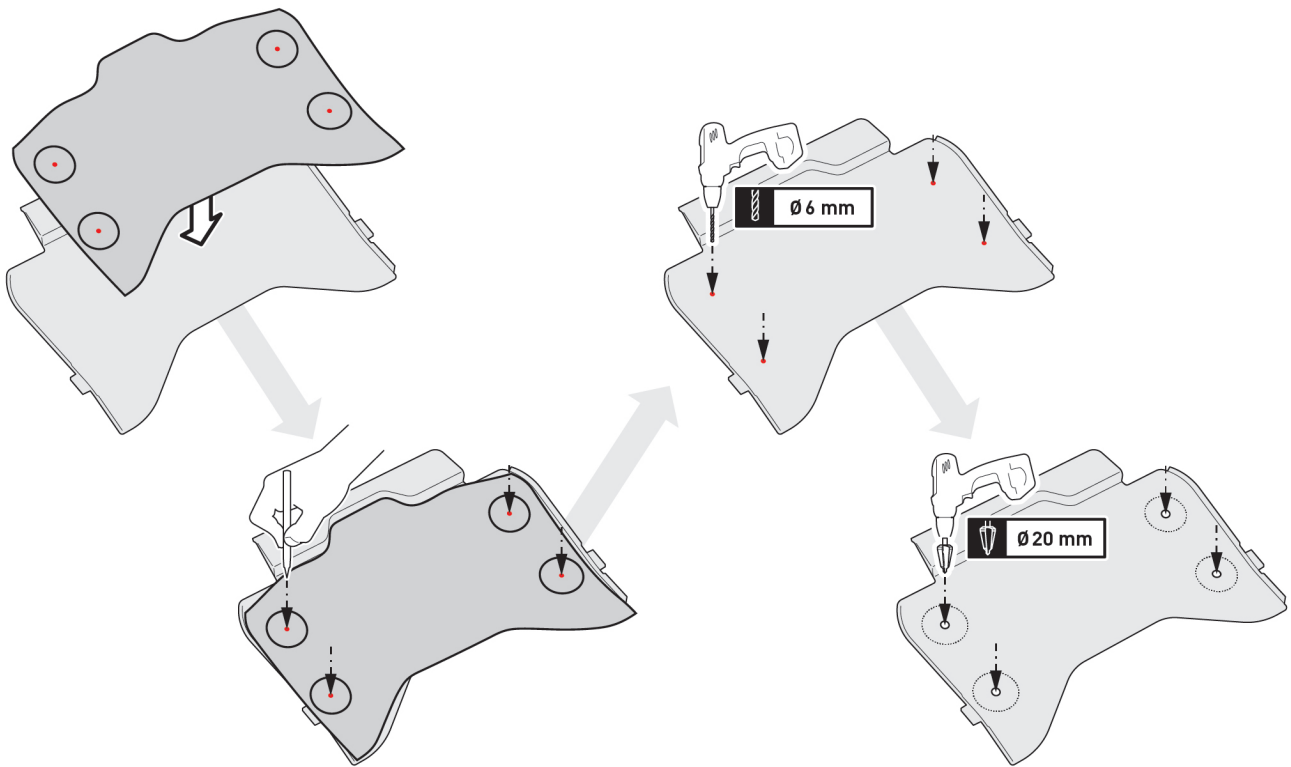
Remove the marked plastic dowels from the rear panel. Pull the back of the rear panel down slightly.

**3**



Loosen the indicated screw and remove the fairing from the vehicle.

4

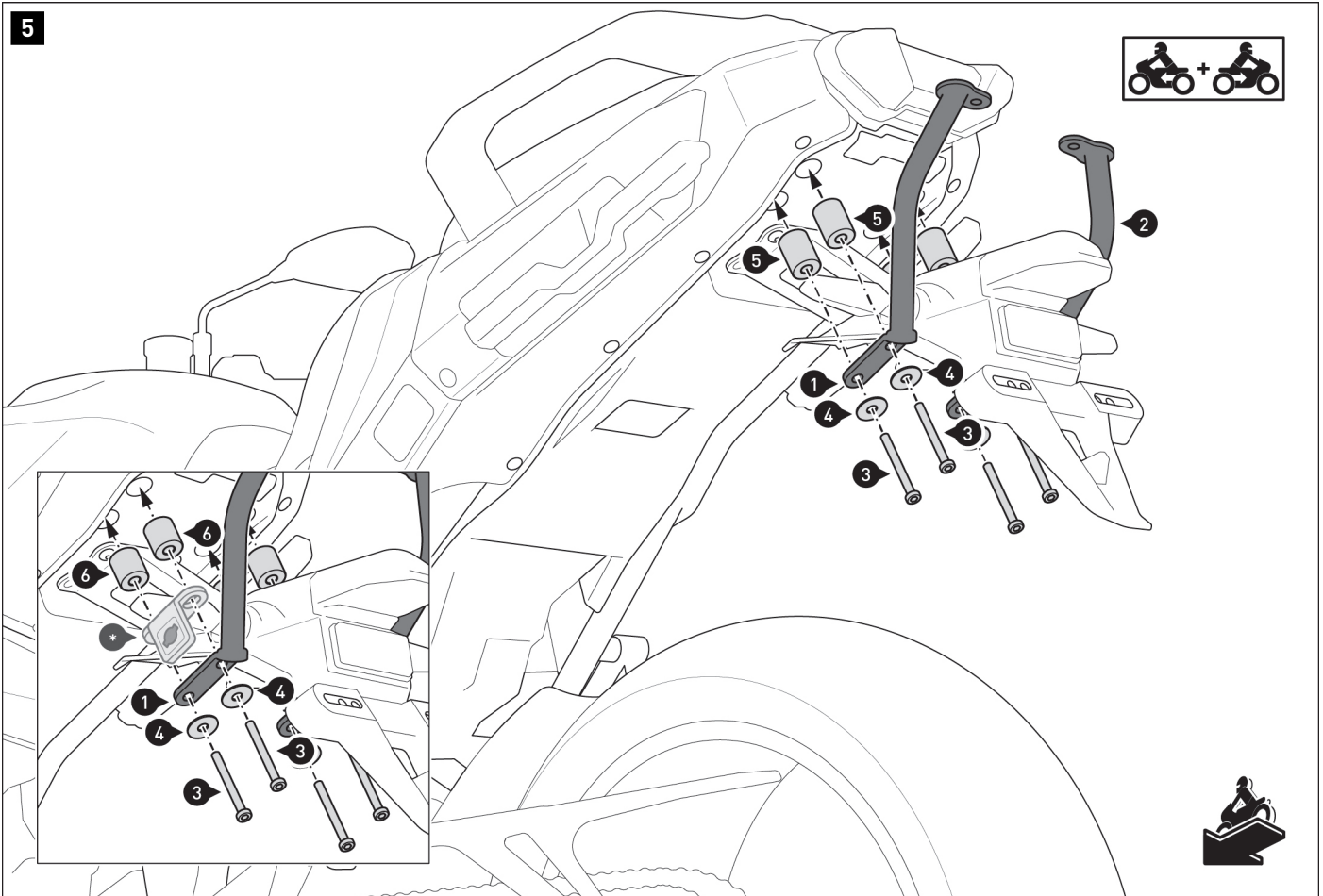


**NOTE:** Check the template dimensions for accuracy.

Carefully cut out the template.  
Place the template on the outside of the fairing (affix with adhesive tape).  
Mark the middle of the holes with a center punch. Then remove the template.  
Place the fairing on a piece of wood. Using a suitable 6 mm drill bit, drill four pilot holes where indicated.  
Then enlarge the pilot holes to 20 mm using a step drill. Deburr the drill edges.

Mount all original parts that were dismantled in **steps [1] to [4]** back onto the vehicle in reverse order.





**⚠ NOTE:** Steps [5] to [6] are not in chronological order, but illustrate specific installation situations (mounting with and without blind spot sensor).

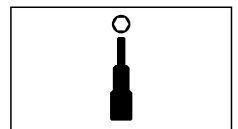
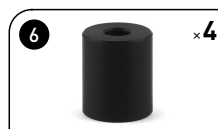
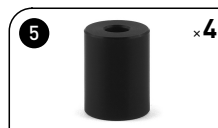
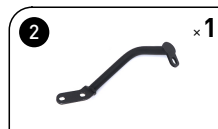
**⚠ NOTE:** The detailed drawing shows the installation of the luggage rack with the SW-MOTECH side carrier. Use the mounting parts included with the side carrier (-) in combination with the mounting parts shown for the luggage rack.

**Installation for vehicles without a blind spot sensor:**

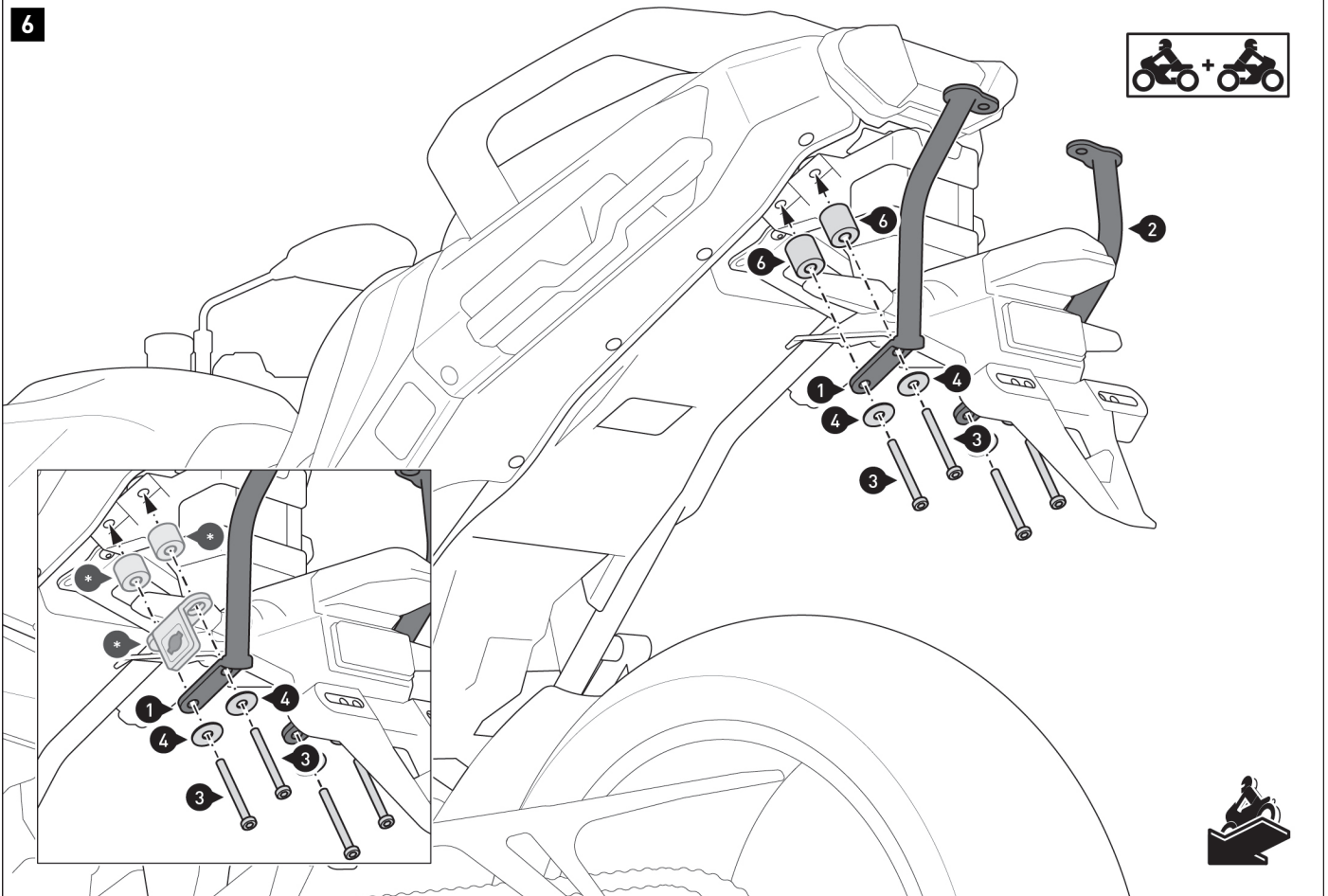
Screw the struts (1/2) to both sides of the bike.

**⚠ WARNING:** Use liquid threadlocker!

Do not tighten the screws (3) yet.







**⚠ NOTE:** The detailed drawing shows the installation of the luggage rack with the SW-MOTECH side carrier. Use the mounting parts included with the side carrier (-) in combination with the mounting parts shown for the luggage rack.

**Installation for vehicles with built-in blind spot sensor:**

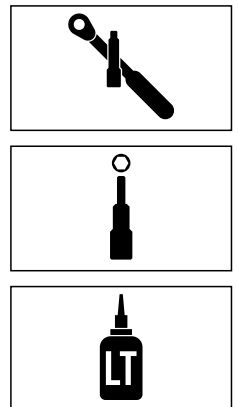
**⚠ NOTE:** For information on the remaining parts to be mounted, please refer to the parts list in **step [5]**.

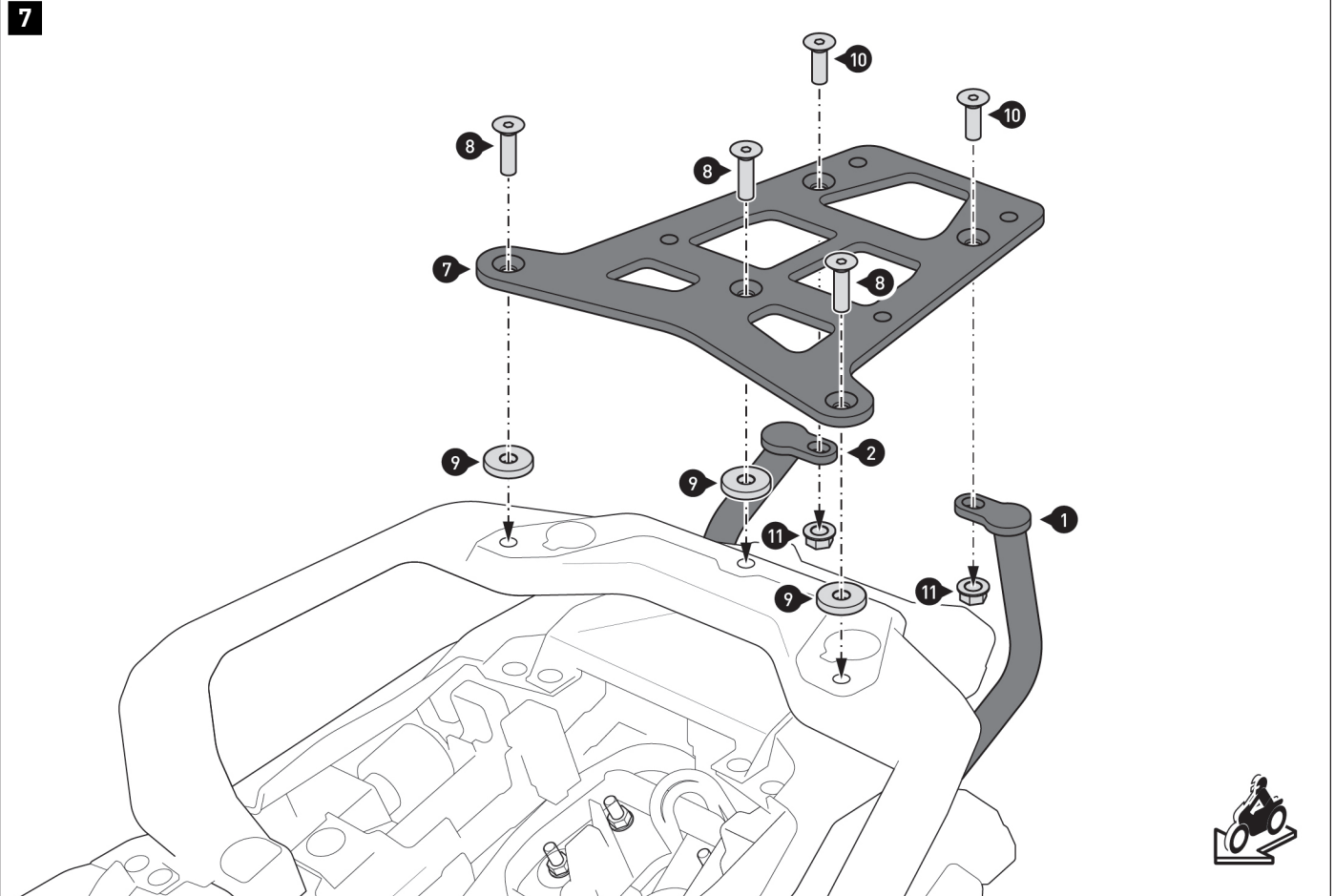
Remove the four blind spot sensor screws from the vehicle.

Screw the struts (1/2) to **both sides** of the bike.

**⚠ WARNING: Use liquid threadlocker!**

Do not tighten the screws (3) yet.

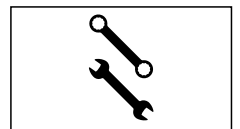
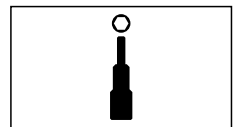
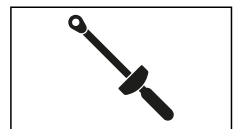
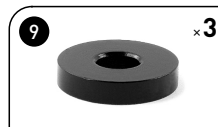
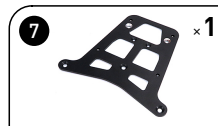




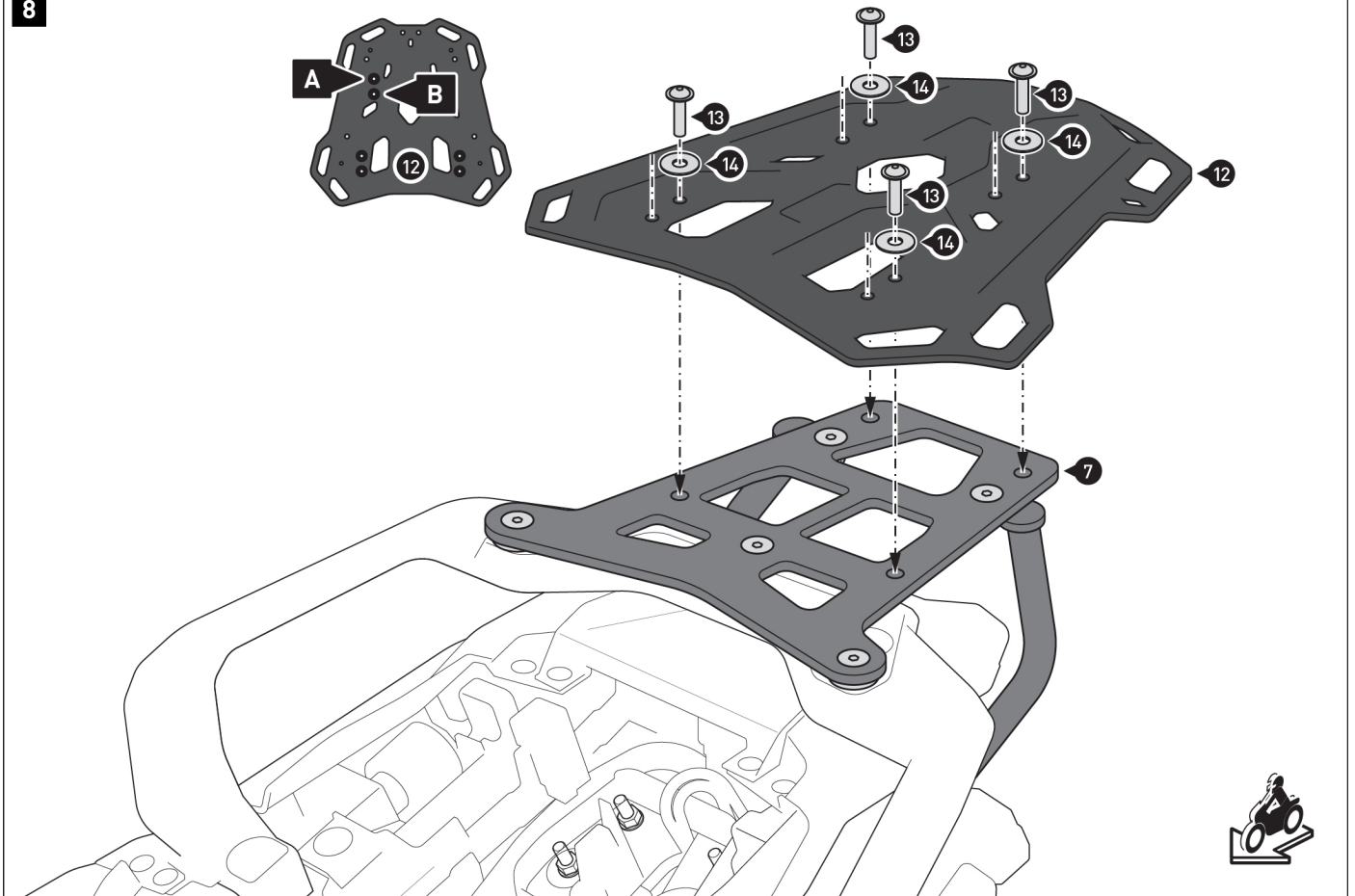
Screw the base (7) to the bike and the struts (1/2).

**▲ WARNING: Use liquid threadlocker!**

When all components are in place without tension, tighten screws (3), (8), and (10) as specified in the mounting instructions.

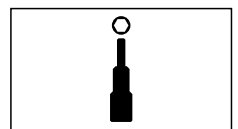
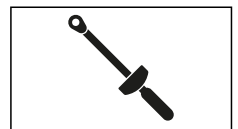


8



**⚠ NOTE:** Depending on the space available, bolt the luggage carrier (12) to the marked **mounting position (A)** or **(B)** as shown in the detailed illustration.

Mount the luggage rack (12) on the base (7).  
Tighten the screws (13) as specified in the mounting instructions.



PRODUCT-SPECIFIC NOTES

**⚠ WARNING:** The specified maximum load includes the weight of the suitcase/luggage and adapter plate/adapter kit. The maximum load of the vehicle specified by the bike manufacturer applies.



≤ 12 KG (≤ 26 lbs)



≤ 130 km/h (≤ 80 mph)

**⚠ A NOTICE:** Observe all country-specific regulations for the registration and operation of your vehicle as well as any applicable TÜV regulations. Have any parts requiring registration entered into your vehicle documents by your vehicle inspection authority after they have been installed.

