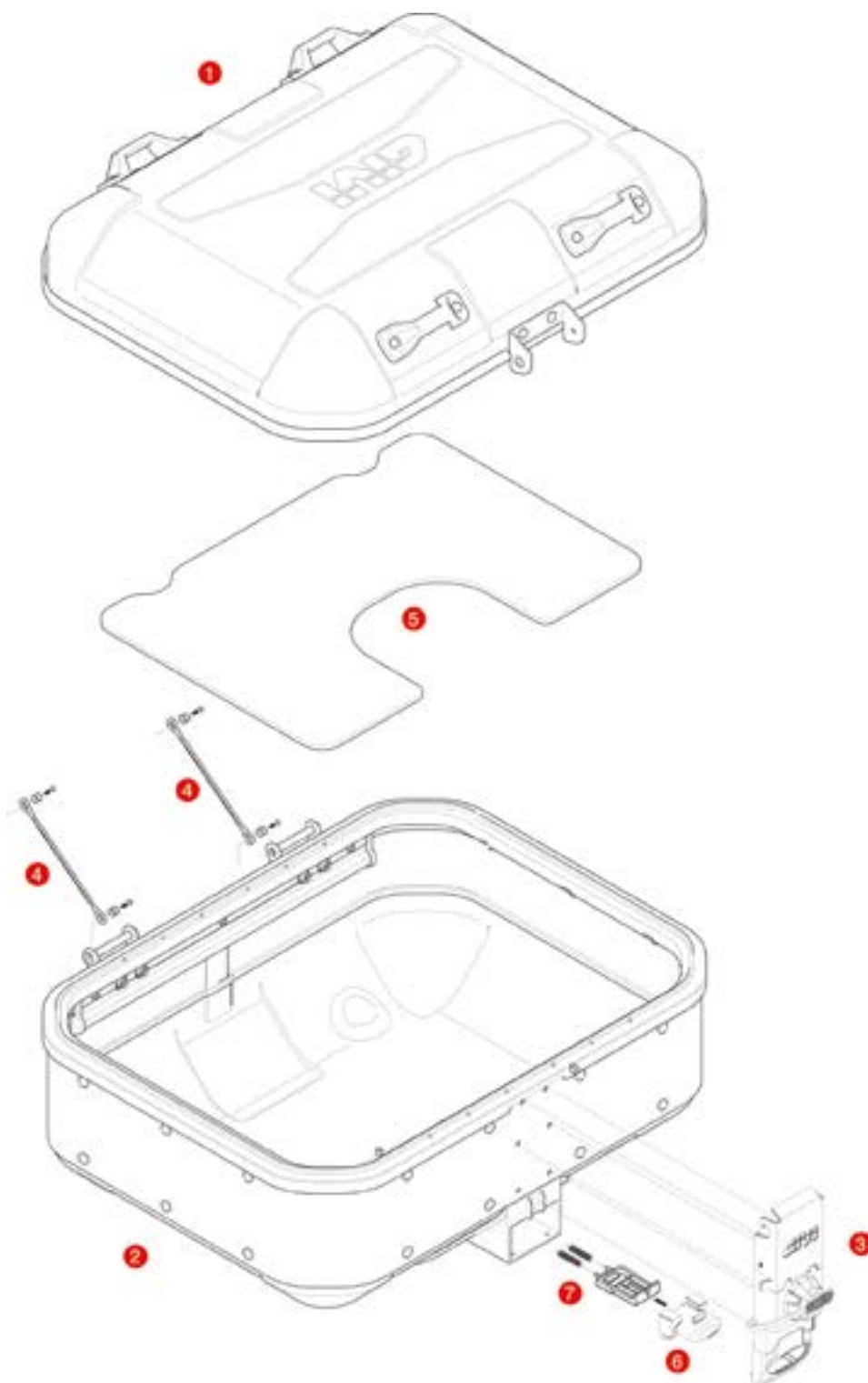


## DLM46 / DLM30 TREKKER DOLOMITI



|   |                   |   |  |  |
|---|-------------------|---|--|--|
| 1 | <b>Z7710R</b>     | DLM46A - DLM30A top-shell               |  |  |
|   | <b>Z7710BR</b>    | DLM46B - DLM30B black painted top-shell |  |  |
| 2 | <b>Z7716-46R</b>  | DLM46A bottom shell                     |  |  |
|   | <b>Z7716-46BR</b> | DLM46B painted black bottom shell       |  |  |
|   | <b>Z7716-30R</b>  | DLM30A bottom shell                     |  |  |
|   | <b>Z7716-30BR</b> | DLM30B painted black bottom shell       |  |  |
| 3 | <b>Z8024M46R</b>  | DLM46 lock set                          |  |  |

|   |                  |   |  |  |
|---|------------------|---|--|--|
|   | <b>Z8024M30R</b> | DLM30 lock set  |  |  |
| 4 | <b>Z115R</b>     | Stop bag opening yarn, 2 pcs.   |  |  |
| 5 | <b>Z8103R</b>    | Inner mat   |  |  |
| 6 | <b>Z845CR</b>    | Opening push button chromed   |  |  |
| 7 | <b>Z1782CR</b>   | Bolt with springs   |  |  |
|   | <b>SL101</b>     | Security lock set including cylinder, 2 keys, bush and under lock platelets |  |  |