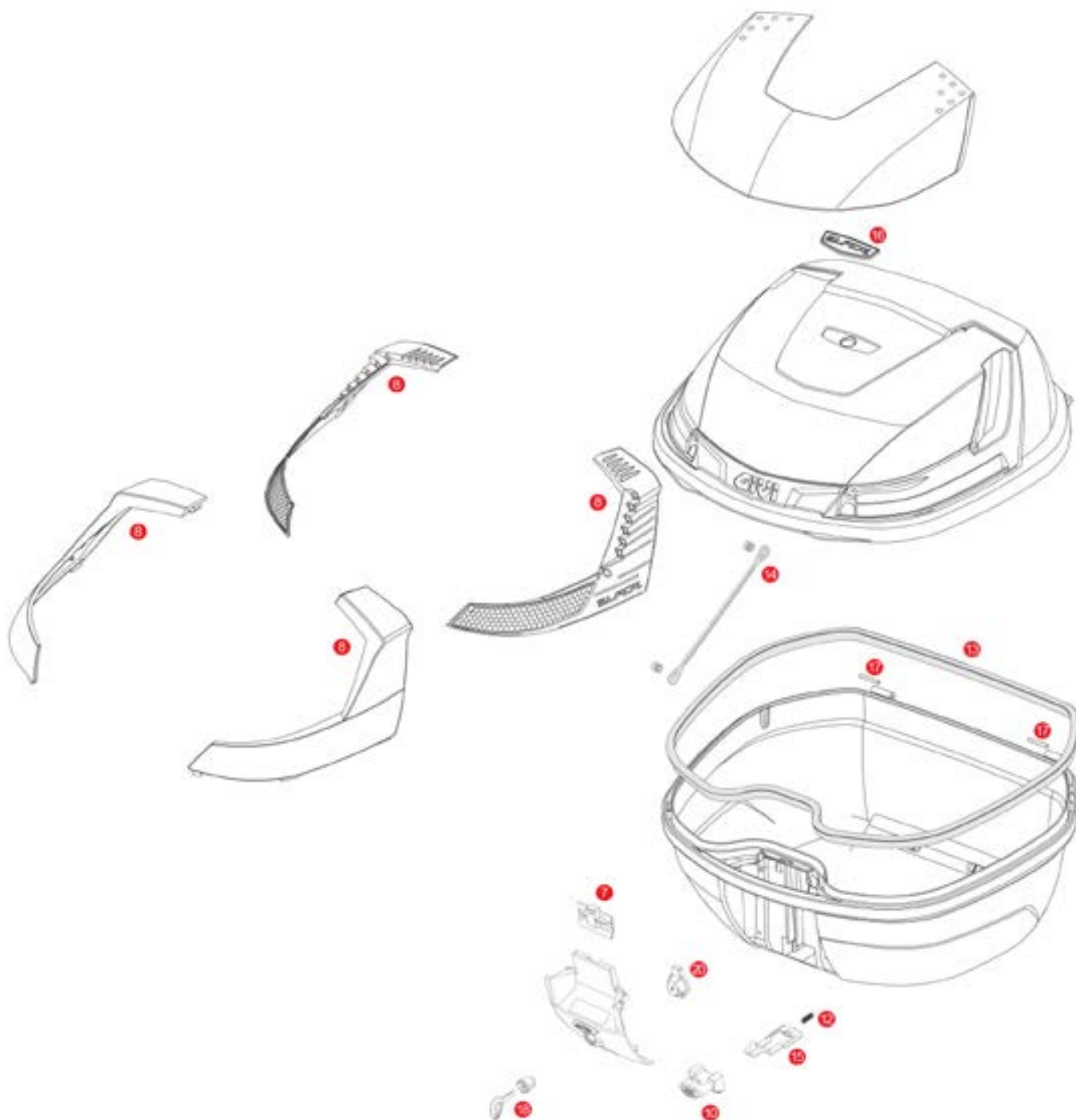


## B37 BLADE / B37 BLADE TECH



	<b>ZB37CNM</b>	B37 Blade assembled top-shell black		
	<b>ZB37CNTM</b>	B37 Blade Tech assembled top-shell black		
	<b>ZB37FNM</b>	B37 Blade / B360 assembled bottom-shell black		
	<b>ZB37FNMTM</b>	B37 Blade Tech / B360 Tech assembled bottom-shell black		
	<b>Z3007NM</b>	Mounted lock set		
	<b>Z3007NTM</b>	Mounted lock set NT		
7	<b>Z3012R</b>	Closure system mounted on the lid		
8	<b>Z4506R</b>	Red reflectors with stop lamp holder (for B47 Blade)		
	<b>Z4506FR</b>	Smoked reflectors with stop lamp holder (for B47 Blade Tech)		
10	<b>Z645R</b>	Push button red		

	<b>Z645CR</b>	Opening push button chromed		
12	<b>Z191R</b>	Push button spring, 1 pcs.		
13	<b>Z790R</b>	Trim		
14	<b>Z599</b>	Nylon stop bag opening yarn		
15	<b>Z761NR</b>	Bolt, 1 pcs.		
16	<b>Z4504AR</b>	Chromed Blade logo		
17	<b>Z590R</b>	Pin. Medium, 2 pcs.		
18	<b>Z140R</b>	Key locks with corresponding bush with red handle		
	<b>Z661A</b>	Key locks with corresponding bush with silver handle		
20	<b>Z3006R</b>	Plate below lock, for standard key		
	<b>Z4512R</b>	Plate below lock for Security Lock key		