

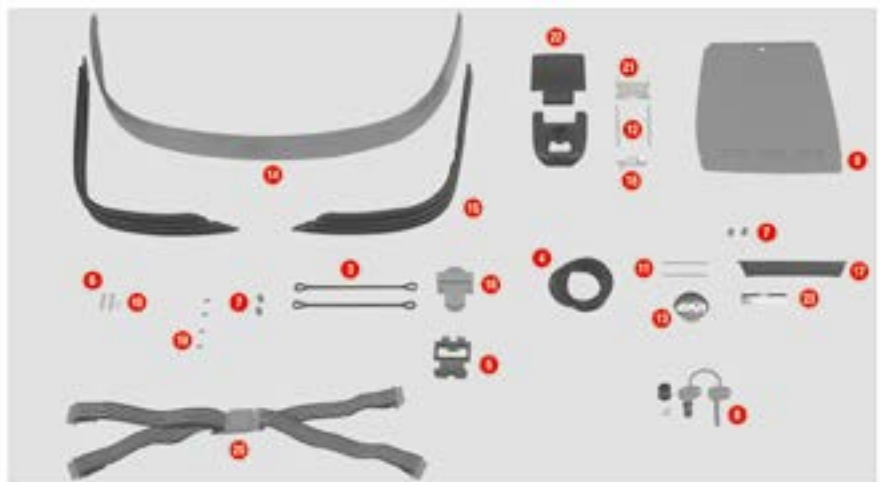
## E460



1	<b>Z460CNM</b>	E460 top-shell black		
2	<b>Z360FNM</b>	E460-E360 bottom-shell black		
3	<b>Z115R</b>	Stop bag opening yarn, 2 pcs.		
4	<b>Z159R</b>	Bag lock lining, 1 pcs.		
5	<b>Z828</b>	Stop lamp holder		
6	<b>Z106</b>	Bolt		
7	<b>Z109</b>	Long bolt springs		
8	<b>Z112R</b>	Red pulley, 4 pcs.		
9	<b>Z140R</b>	Key locks with corresponding bush with red handle		
11	<b>Z1237</b>	Push button spring with washer		
13	<b>Z195</b>	Pin D. 04x80 mm		
14	<b>Z200</b>	GIVI logo MONOKEY®		

15	<b>Z214</b>	Top-case reflector		
16	<b>Z215N</b>	Rear band black		
17	<b>Z217</b>	Push button		
19	<b>Z236</b>	Hinge spring		
20	<b>Z277</b>	Plate below lock		
22	<b>Z285</b>	Inner strap		
24	<b>Z314N</b>	Hinge black		
26	<b>Z337</b>	Top-case reflector		
27	<b>Z362</b>	Light seat chromed		
	<b>Z358</b>	Circuit with lamps for version with stop light already mounted		
	<b>Z155</b>	Straps holder clip		
	<b>Z314NM</b>	Hinge black, mounted		

## E360



1	<b>Z360CNM</b>	E360 top-shell black		
2	<b>Z360FNM</b>	E460-E360 bottom-shell black		
3	<b>Z115R</b>	Stop bag opening yarn, 2 pcs.		
4	<b>Z159R</b>	Bag lock lining, 1 pcs.		
5	<b>Z106</b>	Bolt		
6	<b>Z109</b>	Long bolt springs		
7	<b>Z112R</b>	Red pulley, 4 pcs.		
8	<b>Z140R</b>	Key locks with corresponding bush with red handle		
10	<b>Z1237</b>	Push button spring with washer		

12	<b>Z195</b>	Pin D. 04x80 mm		
13	<b>Z200</b>	GIVI logo MONOKEY®		
14	<b>Z214</b>	Top-case reflector		
15	<b>Z215N</b>	Rear band black		
16	<b>Z217</b>	Push button		
18	<b>Z277</b>	Plate below lock		
20	<b>Z285</b>	Inner strap		
22	<b>Z314N</b>	Hinge black		
	<b>Z155</b>	Straps holder clip		