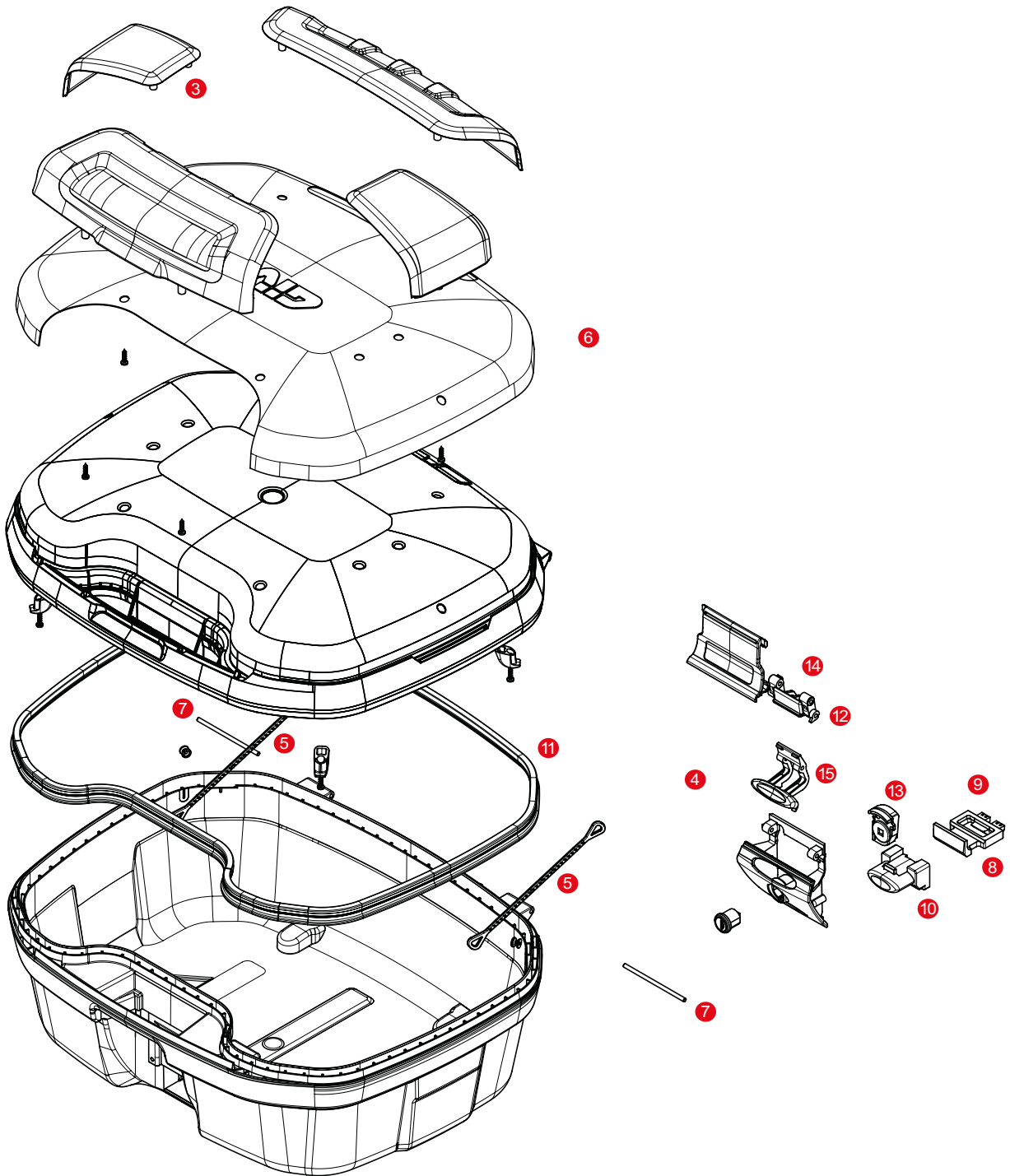


## TRK35N / TRK35B TREKKER II 35



	<b>Z2282CNM</b>	TRK35N assembled Top Shell		
	<b>Z2282CBM</b>	TRK35B assembled Top Shell black		
	<b>Z2282FNM</b>	TRK35N-TRK35B assembled Bottom Shell		
3	<b>Z9681R</b>	Top Shell plates set		
4	<b>Z641N33M</b>	Hinge stop		
5	<b>Z599</b>	Nylon stop bag opening yarn		
6	<b>Z7813QXR</b>	TRK35N aluminium cover		
	<b>Z7813NR</b>	TRK35B black painted aluminium cover		
7	<b>Z721R</b>	Pin. D. 04x85 mm		
8	<b>Z106</b>	Bolt		
9	<b>Z109</b>	Long bolt springs		

10	<b>Z645CR</b>	Opening push button chromed		
	<b>Z2106R</b>	Elastic belt		
11	<b>Z795R</b>	Trim (1 pc)		
	<b>Z409R</b>	Name holder, 1 pcs.		
	<b>Z630</b>	Steel spheres D. 6		
12	<b>Z632R</b>	Steel torsion spring		
13	<b>Z4513R</b>	Plate below lock for Security Lock key		
14	<b>Z643NR</b>	Lock set element black		
15	<b>Z644NR</b>	Opening push button black		
	<b>Z647R</b>	Torsion spring, 1 pcs.		
	<b>SL101</b>	Security lock set including cylinder, 2 keys, bush and under lock platelets		