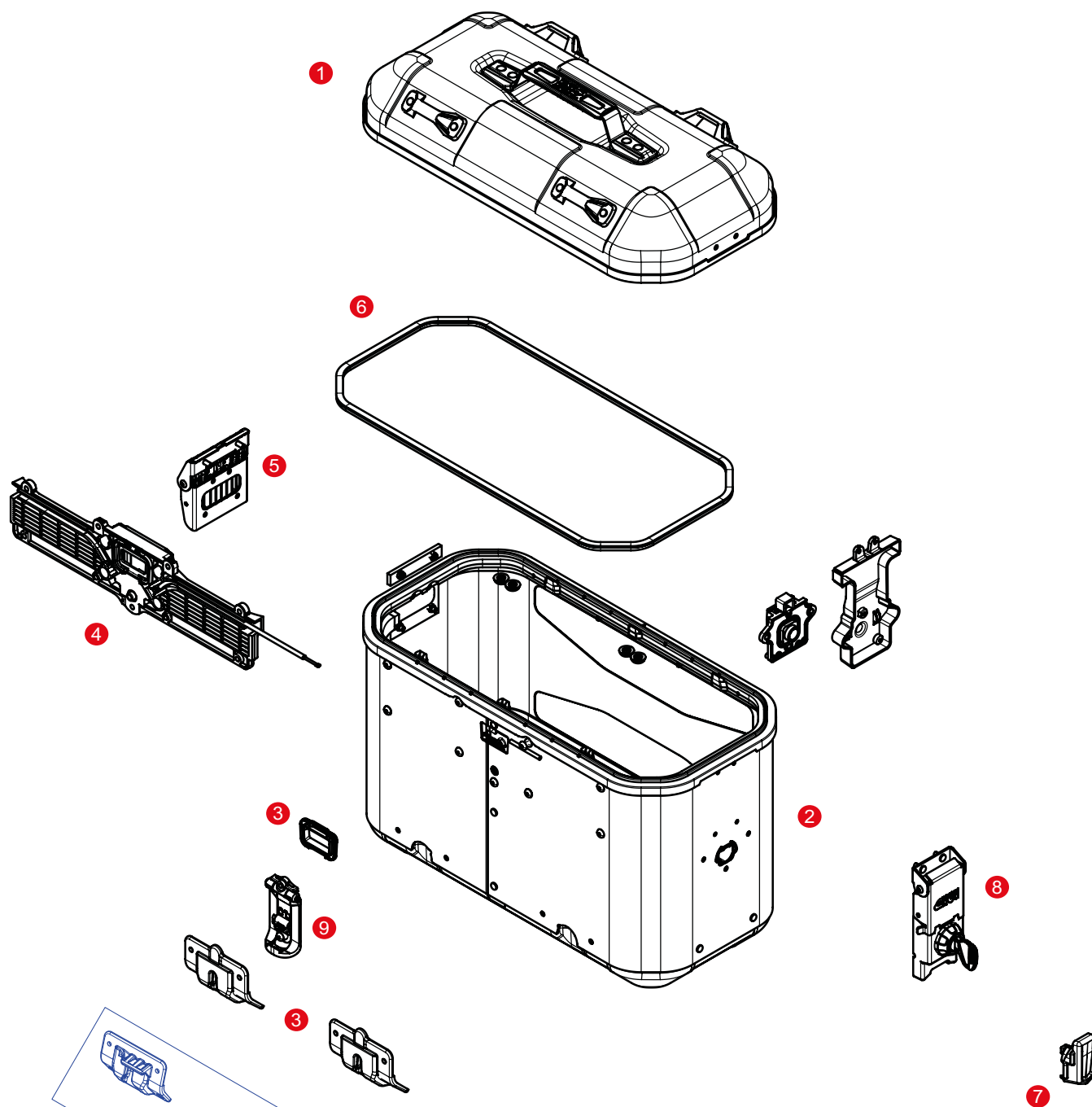


**DLMK36A / DLMK36B TREKKER DOLOMITI (MONOKEY®)**


1	<b>ZDLMK36ARCM</b>	DLMK36A assembled Top Shell in aluminium, right		
	<b>ZDLMK36ALCM</b>	DLMK36A assembled Top Shell in aluminium, left		
	<b>ZDLMK36BRCM</b>	DLMK36B black painted assembled Top Shell, right		
	<b>ZDLMK36BLCM</b>	DLMK36B black painted assembled Top Shell, left		
2	<b>ZDLMK36ARFM</b>	DLMK36A assembled Top Shell in aluminium, right		
	<b>ZDLMK36ALFM</b>	DLMK36A assembled Top Shell in aluminium, left		
	<b>ZDLMK36BRFM</b>	DLMK36B black painted assembled Bottom Shell, right		
	<b>ZDLMK36BLFM</b>	DLMK36B black painted assembled Bottom Shell, left		
3	<b>Z9864MR</b>	MONOKEY® DLMK fitting system		

4	<b>Z9861MDXR</b>	Reinforcement-right internal release mechanism		
	<b>Z9861MSXR</b>	Reinforcement - left internal release mechanism		
5	<b>Z1233MR</b>	Hinge cover top-bottom shell		
6	<b>Z4912R</b>	Trim for aluminium cases, 180cm		
7	<b>Z9799R</b>	Release lever		
8	<b>Z8024MR-ALA</b>	Hinge stop		
9	<b>Z9837R</b>	Hook system (Right / Left)		
	<b>SL101</b>	Security lock set including cylinder, 2 keys, bush and under lock platelets		