

Item number: **BC.TRS.00.412.20000**Revision: **00** • Date: **01 - 2025****Legend Gear accessory bag LA10** ~ 0.5 h.EASY      DIFFICULT

**ENGLISH** Thank you for choosing this premium product from SW-MOTECH. Visit our online shop for more information (e.g. model assignments). Required documents (e.g. national type approval) are available there for you to download.

Please read and understand all the instructions, safety information and warnings in these mounting instructions before mounting and using the product in order to avoid injury and damage. Keep these mounting instructions for reference.

This product was developed for vehicles in factory condition. Compatibility with original accessories or accessories from other manufacturers cannot be guaranteed.

These mounting instructions have been prepared to the best of our current knowledge. No legal claims relating to accuracy can be made. Errors and omissions excepted. We reserve the right to make technical and design changes. The copyright is held by SW-MOTECH.

**SAFETY WARNING SYMBOL**

 This warning symbol is used in these mounting instructions to warn of deadly dangers, injuries or other hazards. The words **DANGER**, **WARNING** or **CAUTION** are used as part of this warning symbol to convey important safety messages and information relating to the installation and use of this product. These words, together with the safety warning symbol, mean:

 **DANGER:** Indicates a hazardous situation which, if not avoided, will result in death or serious injury!

 **WARNING:** Indicates a hazardous situation which, if not avoided, may result in death or serious injury!

 **CAUTION:** Indicates a hazardous situation which, if not avoided, may result in minor or moderate injury!

 **NOTE:** Important information, but not relating to a risk of death or injury (property damage only)!

**GENERAL INFORMATION**

 **WARNING:** Assembly and/or maintenance of this product requires advanced technical skill, appropriate tools, and a good understanding of tool usage and torque specifications. For your own safety, SW-MOTECH recommends having the assembly and/or maintenance carried out by a qualified and certified motorcycle workshop.

 **WARNING:** If you do choose to assemble this product yourself, carefully and fully read the mounting instructions before assembly and use, and follow all instructions to avoid serious injury or death. Also observe all relevant information in the vehicle manual when mounting or using the product. IF YOU DO NOT UNDERSTAND ANY PART OF THESE MOUNTING INSTRUCTIONS OR NEED AN EXPLANATION AS TO A SPECIFIC INSTRUCTION, DO NOT ATTEMPT TO INSTALL THIS PRODUCT WITHOUT CONSULTING SW-MOTECH FOR ASSISTANCE!

**PREPARATION:** Read the mounting instructions carefully and make sure that all parts on the parts list are available.

 **CAUTION:** Ensure that your vehicle is standing securely. Switch off the engine and remove the ignition key. Allow the engine/exhaust to cool down if necessary. Disconnect the battery when working on the electrical system. Only use proper tools and always wear safety goggles and gloves during assembly and maintenance. Have a second person help you with assembly and maintenance.

**ASSEMBLY:** All parts and connections removed from the vehicle must be reinstalled according to the vehicle manufacturer's specifications or replaced with parts and hardware supplied by SW-MOTECH.

 **WARNING:** Secure all threads with a medium-strength liquid threadlocker, unless otherwise specified.

 **DANGER:** Tightening torques not defined by SW-MOTECH must be obtained from the vehicle manufacturer or a certified motorbike workshop.

**FUNCTIONAL CHECK:** After mounting the product, ensure that no moving parts are obstructed and that the function of the vehicle is not impeded. Cables and hoses must not rub against each other and/or be hindered in any way.

 **WARNING:** Carry out a comprehensive functionality check before you start to drive. Check the tightening torque of all connections and the tight fit of the product after the first 50 km and then at regular intervals. Mounted accessories can change the handling and stability of the vehicle.



**SW-MOTECH GmbH & Co. KG**  
Ernteweg 7-10  
35282 Rauschenberg  
Germany



 [info@sw-motech.com](mailto:info@sw-motech.com)  
 [www.sw-motech.com](http://www.sw-motech.com)



Take note of the symbols and what they mean in the ASSEMBLY section. If the term OEM appears in the ASSEMBLY section, the vehicle manufacturer's specifications must be observed and applied.



If you have any questions, please don't hesitate to contact our Customer Service team or our distributors. You can find our telephone number and a list of our distributors in our online shop:

**[www.sw-motech.com](http://www.sw-motech.com)**



**Use thread locker:** Indicates that a thread must be coated with liquid thread locker. H (HIGH): high strength; M (MEDIUM): medium strength; L (LOW): low strength.



**Tighten/note the tightening torque information:**

Indicates the tightening torque of a part specified by SW-MOTECH or the vehicle manufacturer (OEM).

1

1



BC.TRS.00.412.20000

1/1

2

2



TL.00.940.003.02

2/2

3



TL.00.940.004.02

1/1

4



TL.00.940.001.02

1/1

5



M5 x 6; DIN 6912  
SC.A2.05.006.01.6912.70

1/1

6



TL.00.940.005.02

1/1

3

7



TL.00.940.002.02

1/1

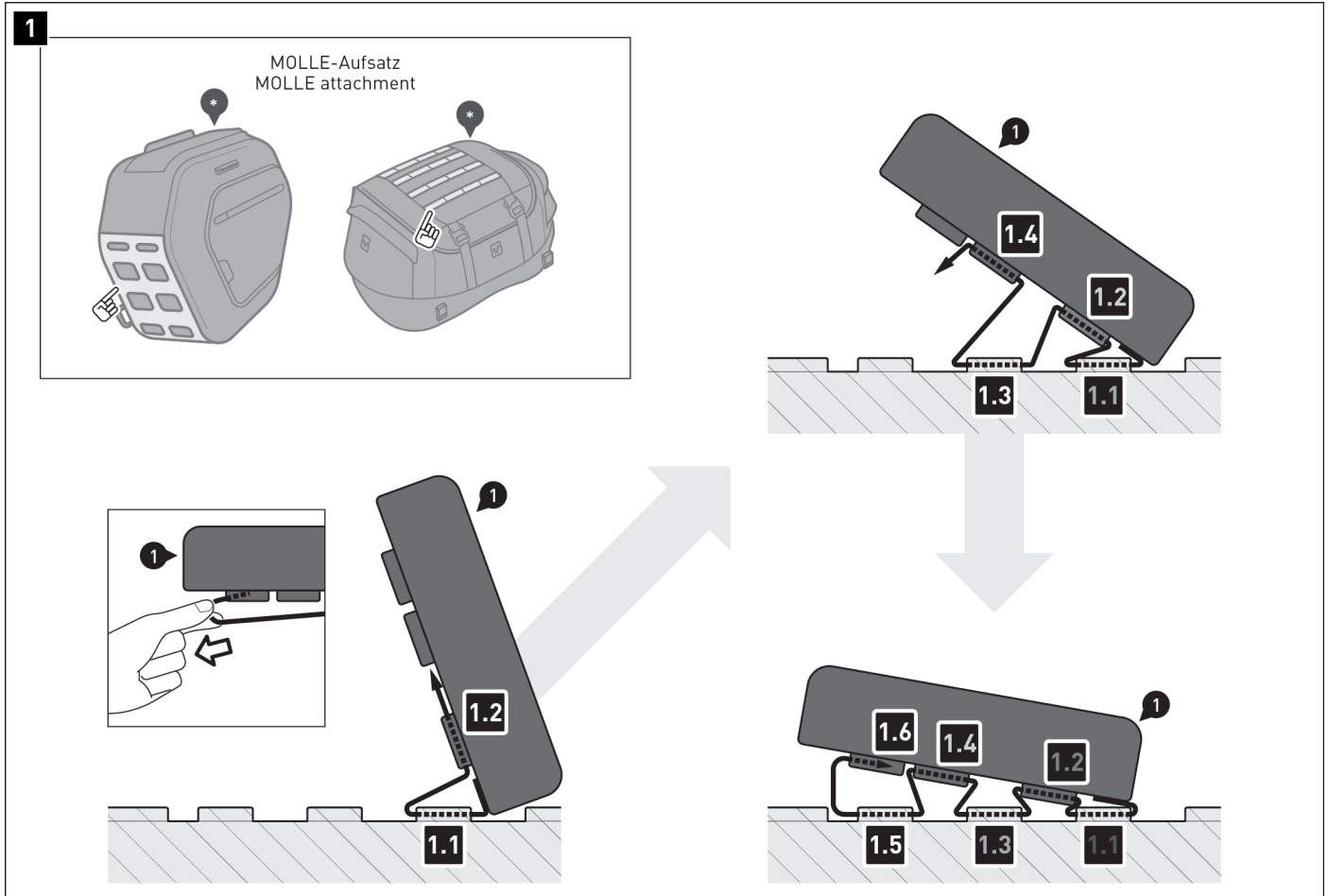
5

8



BC.ZUB.00.154.30000

1/1



**⚠ WARNING:** Always wear eye and hand protection!

**⚠ WARNING:** Always use the proper tools!

**⚠ NOTE:** The accessory bag (1) can be attached to all SW-MOTECH products (\*) with MOLLE connections. For example, the bags BC.HTA.00.406.2000\* or BC.HTA.00.740.3\*00\*.

**⚠ NOTE:** The accessory bag (1) should only be attached when empty.

**⚠ NOTE:** Method [1] is suitable for permanent fastening.

#### Step [1.1] & [1.2]

Feed both straps through the loops [1] on the MOLLE system and then through the loops [2] on the accessory bag (1). Pull the straps tight.

#### Step [1.3] & [1.4]

Now feed the straps through loops [3] and [4]. Then pull the straps tight again.

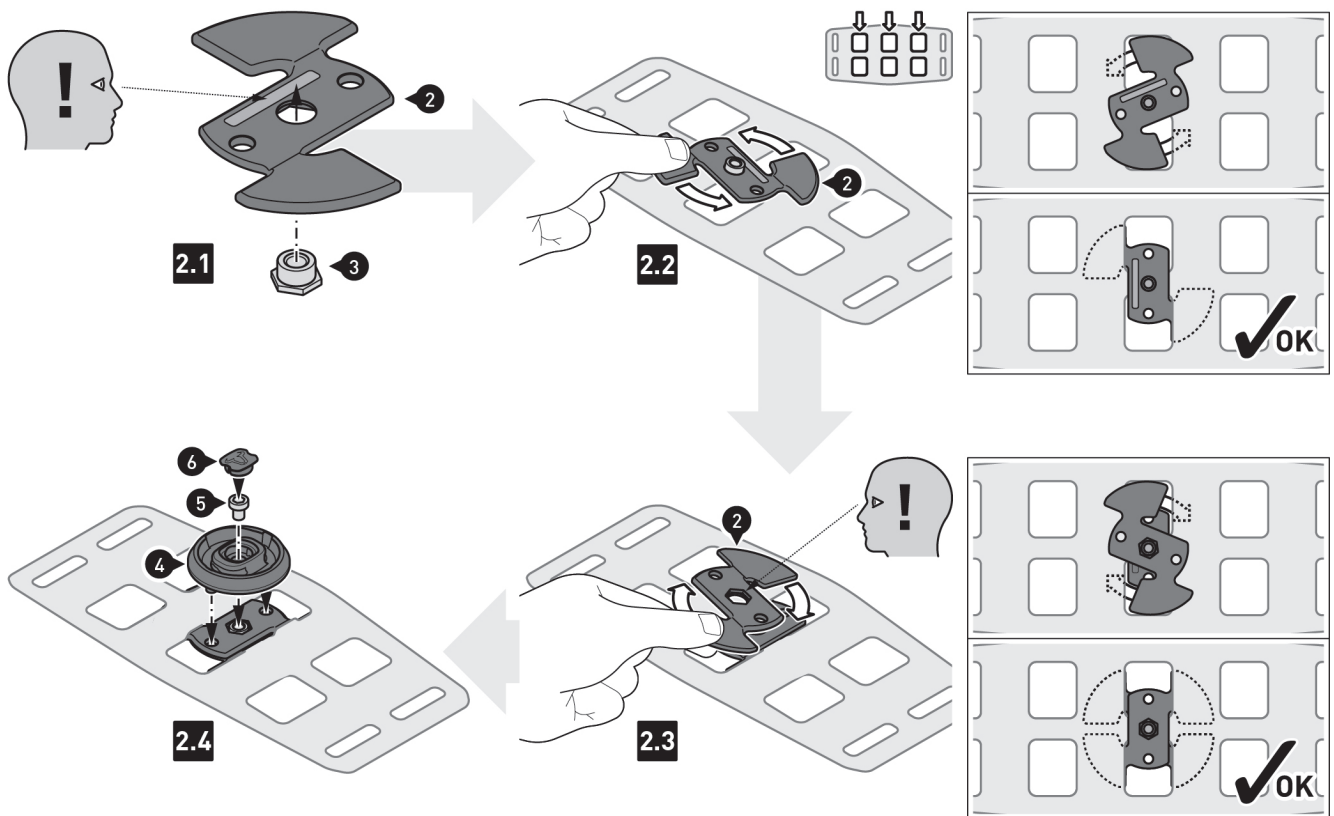
#### Step [1.5] & [1.6]

Now feed the straps through the loops [5]. Tighten the straps. Push the reinforced end pieces of the straps completely through the loops [6] on the accessory bag (1).

**⚠ WARNING:** Check the accessory bag (1) is firmly in place!



2



**⚠ NOTE:** Method [2] is suitable for quick attachment/removal.

#### Step [2.1]

Insert the nut [3] into the hexagonal opening on the adapter [2].

**⚠ WARNING:** The embossed number must be facing upwards!

#### Step [2.2]

Now slide the wings of the adapter [2] under the MOLLE system. Hold the nut [3] in position.

#### Step [2.3]

Then twist the wings of the second adapter [2] under the MOLLE system in the opposite direction.

**⚠ WARNING:** Make sure that the hexagonal opening is facing upwards!

#### Step [2.4]

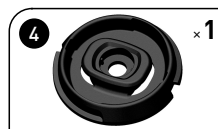
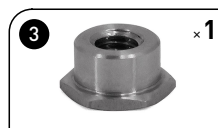
Screw the T-Lock holder [4] onto the adapters [2].

**⚠ WARNING:** Use a liquid threadlocker!

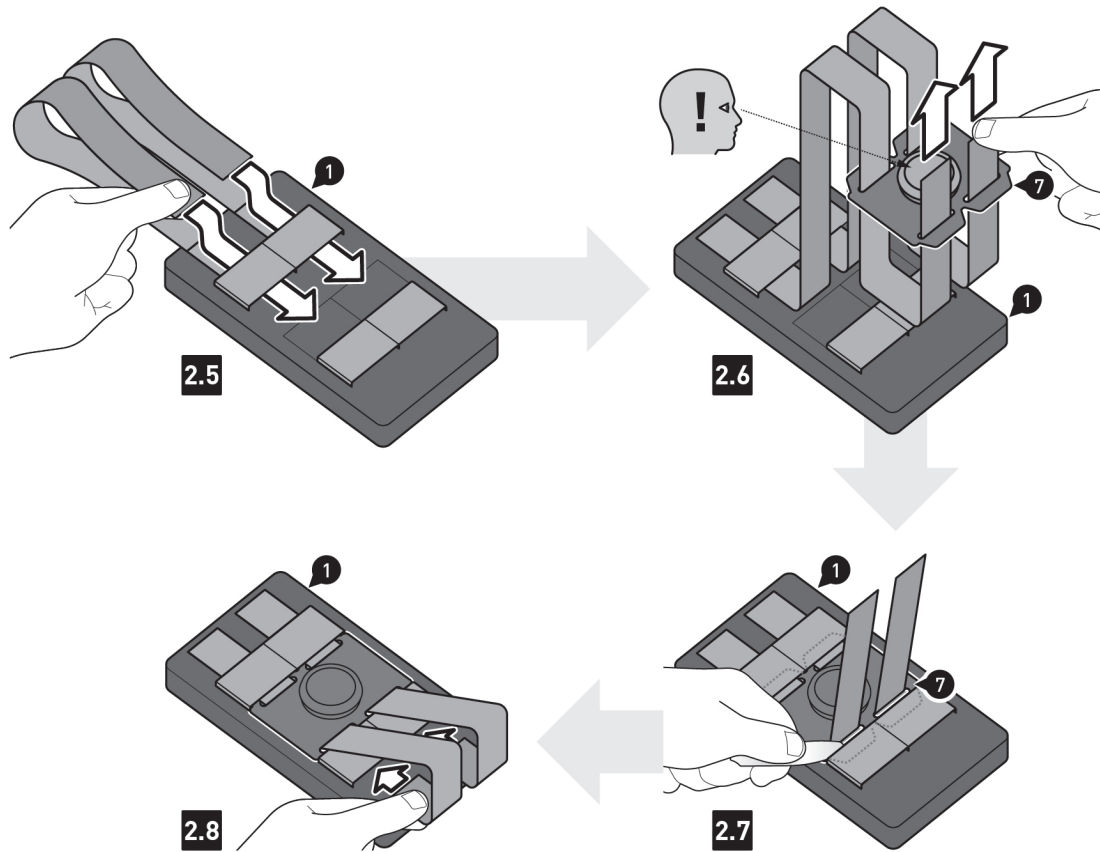
Tighten the screw [5] as specified in the mounting instructions.

**⚠ WARNING:** Tightening the screw too tightly will damage the plastic parts!

Close the opening using the cover cap [6].



3



**NOTE:** The accessory bag (1) should only be attached when empty.

**Step [2.5]**

Feed both straps through the adjacent loops on the accessory bag (1).

**Step [2.6]**

Now feed both straps through the openings on the MOLLE adapter (7).

**NOTE:** The straps shown in the example are extra long.

**Step [2.7]**

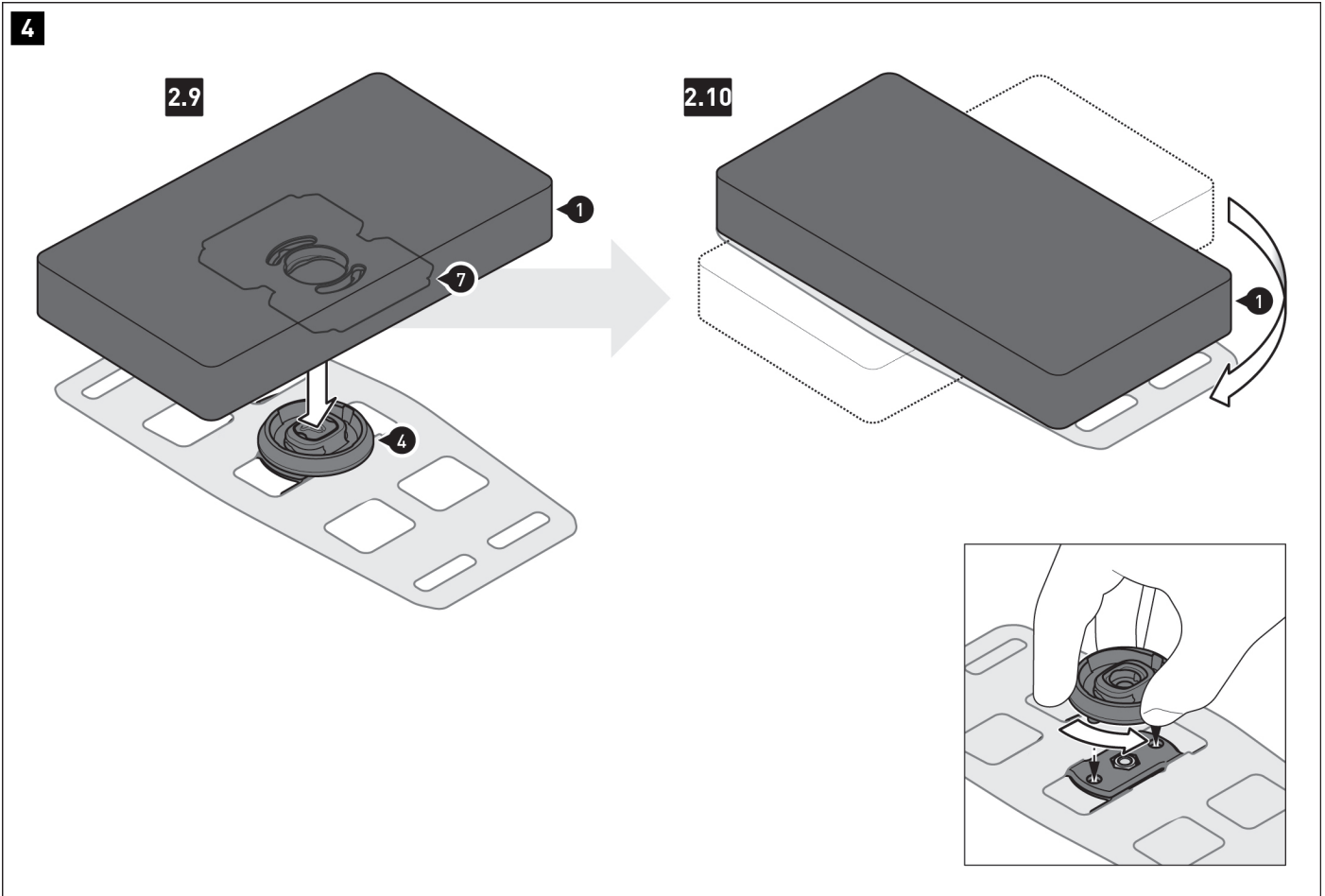
Now push the four straps on the MOLLE adapter (7) under the loops on the accessory bag (1).

*Tip:* Use a flat, blunt object such as a butter knife to lift the loops.

**Step [2.8]**

Pull the fastening straps tight and push the reinforced ends under the loops shown.





#### Step [2.9]

Place the MOLLE adapter (7) on the accessory bag (1) onto the T-Lock holder (4).

#### Step [2.10]

**Attach** the accessory bag (1) by turning it 90 degrees **clockwise** onto the T-Lock holder (4).

Then check that the accessory bag (1) is firmly in place.

To **release**, turn the accessory bag (1) **counterclockwise**.

**⚠ NOTE:** To disassemble, use the anti-rotation device on the T-Lock holder (4) to unscrew the adapter (2) from the MOLLE system, see detailed view on the bottom right. Make sure that the anti-rotation device initially only attaches onto the top of the adapter (2).

5



#### LOADING

**⚠ NOTE:** Always use the enclosed rain cover (8) to protect your luggage from moisture!

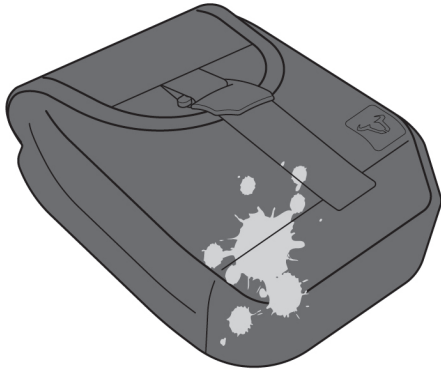
**⚠ NOTE:** Make sure that you never store sharp-edged, pointy or similar objects that could cause injury to persons or damage to the vehicle or accessory bag!

**⚠ WARNING:** Maximum load is 1 kg!





6



### CARE

For cleaning, use **ONLY** a soft textile brush, a cloth or a sponge and warm soapy water! Then rinse with clean water.

**DO NOT** use harsh cleaning agents, abrasive cleaning utensils or high-pressure cleaners! Be sure to clean the accessory bag after having driven in winter to avoid damage caused by salt.

**⚠ NOTE:** Surface materials may be subject to changes in colour (fading) if exposed to prolonged and intense sunlight and environmental influences (e.g. smog, acid rain, etc.)! SW-MOTECH does not assume any liability for this!

#### PRODUCT-SPECIFIC NOTES

**⚠ NOTE:** Observe the country-specific regulations for the registration/operation of your vehicle or applicable TÜV regulations. Have parts that require registration entered in the vehicle documents by your test center after installation.

**⚠ DANGER:** Since this is a universal product, please make sure that the product can be attached and used properly and seamlessly on your vehicle type **BEFORE** using it for the first time! After attaching, check that all vehicle parts can move freely and function properly! Lamps such as taillights and turn light indicators must not be impeded in their function! Cables, wires and hoses should not rub and/or squeeze against anything!

**⚠ DANGER:** Carry out a comprehensive functional check before starting your journey!

**⚠ DANGER:** Check that the product sits firmly in place before starting your journey and at every rest stop (every 200 km)!

**⚠ DANGER:** The driving/braking behavior of the motorcycle changes noticeably after the attachment of this product!

**⚠ DANGER:** Lean angle and ground clearance may be restricted by this product!

**⚠ DANGER:** Not suitable for offroad use!

**⚠ DANGER:** The maximum vehicle load defined by the vehicle manufacturer may **NOT** be exceeded.

	see LOAD		≤ 130km/h (≤ 80mph)
---	----------	---	---------------------